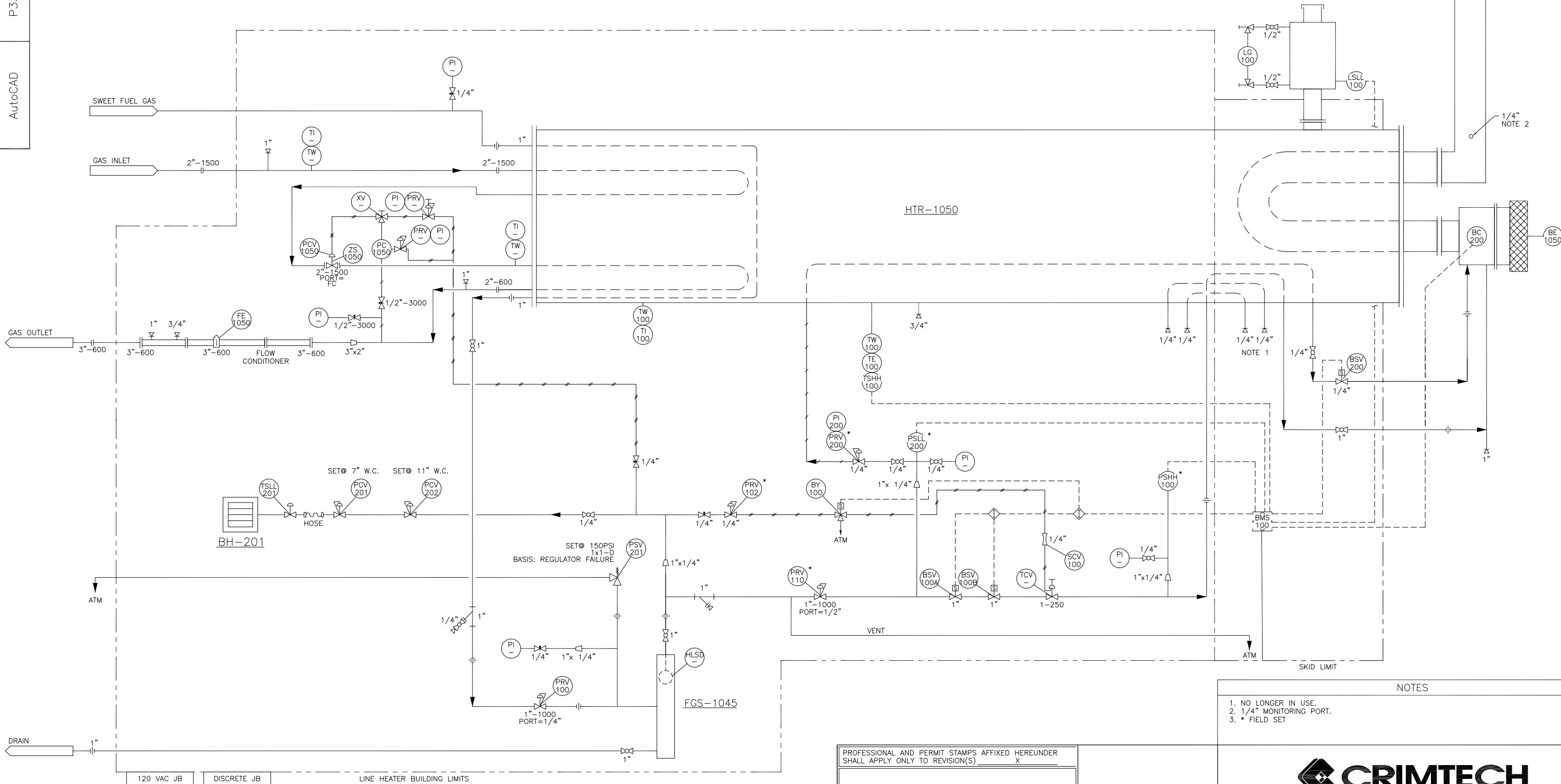


BH-201
BUILDING HEATER
 DUTY: 12,000 BTU/HR
 MFR: CATADYNE
 MODEL No.: BX 12x24

FGS-1045
FUEL GAS SCRUBBER
 SIZE: 6 5/8" OD x 36" S/S
 MAWP: 150 psi @ 150°F
 MDMT: -20°F @ 150 psi
 CA: 1/16"
 CRN: M0993.213

HTR-1050
LINE HEATER
 SIZE: 54" OD x 192" S/S (TBC)
 DUTY: 0.75 MMBTU/HR
 SERIAL NO: 03-3563-2-1/2
 COIL 1 SIZE: 2" SCH 160, 4-PASS, CRN M3047.2
 MWP: COIL 1- 20685 kPa @ 121°C
 COIL 2 SIZE: 2" SCH 80, 10-PASS, CRN N1616.2
 MWP: COIL 2- 9170 kPa @ 121°C

BMS-100
BURNER MANAGEMENT SYSTEM
 MFR: COMBUSTEX
 MODEL: BMS 2500



- NOTES
1. NO LONGER IN USE.
 2. 1/4" MONITORING PORT.
 3. * FIELD SET

PROFESSIONAL AND PERMIT STAMPS AFFIXED HEREUNDER SHALL APPLY ONLY TO REVISION(S)



CERTIFIED PREOWNED EQUIPMENT
 0.75 MMBTU 2" 1500# x 2" 600# SOUR LINE HEATER
 PIPING AND INSTRUMENTATION DIAGRAM

STOCK UNIT IDENTIFIER P3317-06	SCALE NTS	CRIMTECH DRAWING NUMBER P3317-06-MF-01	REV. 0
CLIENT DWG NUMBER -			

APPROVED FOR CONSTRUCTION

BY: _____ DATE YY MM DD

BY: _____ DATE YY MM DD

NO.		DATE		REVISIONS		DRAWN		CHECK		DESIGN		APPR.		NO.		TITLE	
0	18 12 19	ISSUED FOR INFORMATION (P3317-06)		EDW	CN									P3317-06-EL-01	WIRING DIAGRAM		
REFERENCE DRAWINGS																	

THIS DRAWING IS THE PROPERTY OF CRIMTECH SERVICES LTD. ON BEHALF OF ITS CLIENT. FOR COPIES OR REVISIONS TO THIS DRAWING, PLEASE CALL 1-800-993-9958.