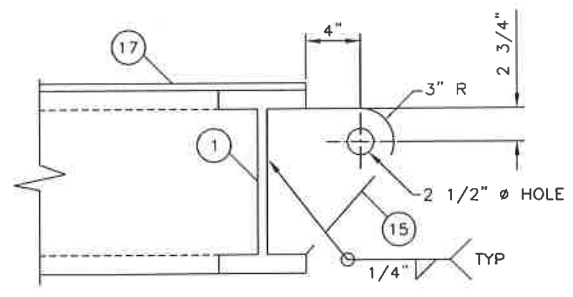


BILL OF MATERIALS			
TAG NO.	QNTY.	DESCRIPTIONS	MAT'L SPEC.
1	2	WB x 18# (18'-0")	G40.21-44W
2	4	WB x 18# (7'-6 1/2")	G40.21-44W
3			
4	1	C8 x 11.5# (7'-6 1/2")	G40.21-44W
5	1	C8 x 11.5# (1'-5")	G40.21-44W
6	2	C8 x 11.5# (8'-1 1/4")	G40.21-44W
7	1	C8 x 11.5# (5'-7 3/4")	G40.21-44W
8	2	C8 x 11.5# (2'-1")	G40.21-44W
9			
10	1	2" x 2" x 3/16" ANGLE (1'-5")	G40.21-44W
11	2	2" x 2" x 3/16" ANGLE (2'-10")	G40.21-44W
12	1	2" x 2" x 3/16" ANGLE (2'-1")	G40.21-44W
13	2	2" x 2" x 3/16" ANGLE (2'-7")	G40.21-44W
14			
15	4	LIFTING LUG- 1" THK PLATE	G40.21-44W
16			
17	1	3/16" THK. CHK'D. PLATE (6'-0" x 8'-0")	G40.21-44W
18	4	3/4" DIA. x 2 1/2" LG BOLTS c/w NUT	GR-5
19	1	DRAIN CONTAINMENT- 16" SCH 40 PIPE x 1'-6" LG	SA-53B



DETAIL - LIFT LUG
(4 REQUIRED)

- NOTES:
- ALL WELDS TO BE 1/4" ALL AROUND UNLESS OTHERWISE NOTED.
 - CROSS MEMBERS TO BE COPE TO MAIN MEMBERS AND FULLY WELDED.
 - CHK'D PLATE SEAMS TO BE 100% SEAL WELDED & STITCH WELDED TO MAIN MEMBER.
 - UNDERSIDE OF SKID TO BE INSULATED WITH 2" POLYURETHANE FOAM.
 - ESTIMATED SHIPPING WT : 2600 LBS

(2) REQ'D
TIME CARD
C-2631-SK

SN# C-2502 H.V.S.

REV	DESCRIPTION	DATE	BY



CUSTOMER:	DEVON CANADA CORPORATION	LOCATION:	12-30-34-15 W4M
c/o HATCH OPTIMA			09-08-39-18-W4M
STRUCTURAL SKID			
16" OD SEPARATOR/100 BBL TANK PACKAGE (SWEET)			
DATE:	DRN BY:	SCALE:	CHKD BY:
07/13/06	Y.P.	1"=1'-0"	
APPRD BY:	DWG NO:	C-2631-D	REV: 0